

Sample Material © Pearson 2023

Longman
English

Leap

Katherine A. Jenkins
Ryan Chapman



2A

Places at school



Ch1

You will learn to ...

- Ask and answer questions about places at school
Is there a computer room? Yes, there is. / No, there isn't.
- Use ordinal numbers to talk about floors
It's on the first floor.
- Use prepositions to talk about locations
It's on the first floor.

What places are there in your school?
Which place do you like best?



Your Task

Making a booklet about places
in our dream school

Ch 2

You will learn to ...

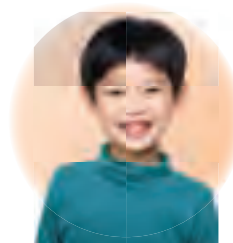
- Talk about school rules

Read the magazine article.

Big Kids Magazine

This month's topic:

My Dream School



Kenny Li

Kenny Li is the winner of the **My Dream School** drawing competition. Our reporter Flora talks to him.

F = Flora (reporter)

K = Kenny

F : Well done, Kenny! What is your favourite place in your dream school?

K : My favourite place is the library. It is on the first floor. It is like a park! We can climb up to the treehouse and read there. There is a slide to go back down.



Post-reading



Read the magazine article again. Finish the school directory.

Kenny's dream school

| Floor | Room |
|-------|------------|
| 5/F | |
| 4/F | |
| 3/F | classrooms |
| 2/F | music room |
| 1/F | |
| G/F | playground |

Tick (✓) the best answers and answer the question.

1 What can you do in the library?

☐

A. sit in cars

☐

B. read in the treehouse

☐

C. play computer games

☐

D. eat on the slide

2 What CAN'T you do in Kenny's dream school?

☐

A. use computers

☐

B. drive cars

☐

C. eat

☐

D. grow fruit and vegetables



3 Does Flora like Kenny's school? _____

Underline the sentence on p.4 or p.5 that tells you the answer.

Phonics

cl-

classroom close

pl-

place playground



Listen and write the letters 'cl' or 'pl'. Say the sentences.

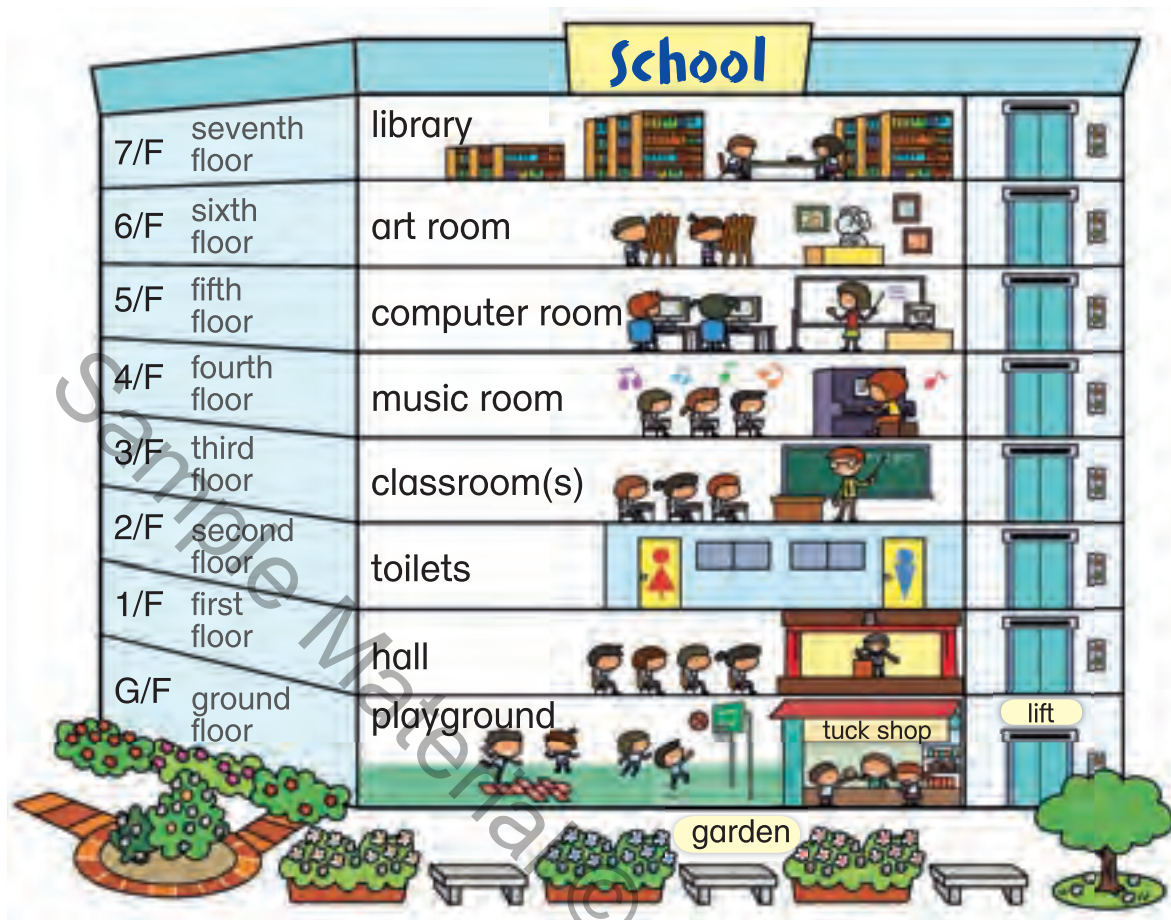


_____ ease don't _____ ay with _____ ay.

_____ ean your hands and put it away!

You can also blend 'l' with other sounds.

black floor glass slide



Compound nouns are made up of two or more words.



computer

+



room

=



computer room



English

+



corner

=



English corner

Structure table

| | | | |
|----------|------------------|--|--|
| Is there | a computer room? | | |
| | an art room? | | |

Yes, **there is**.

No, **there isn't**.

isn't = is not

| | | | | |
|------|----|-----|--------|--------|
| It's | on | the | ground | floor. |
| | | | third | |

It's = It is

| | |
|----------|------------------|
| Is there | a computer room? |
| | an art room? |

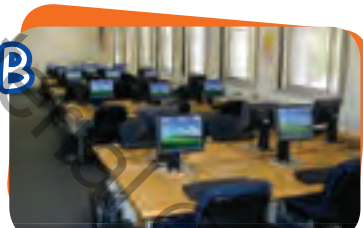
| |
|--------------------------|
| Yes, there is . |
| No, there isn't . |

| | | | | |
|------|----|-----|--------|--------|
| It's | on | the | ground | floor. |
| | | | third | |

Design your dream school

A What places are there in your dream school? Write the names below or draw your own.

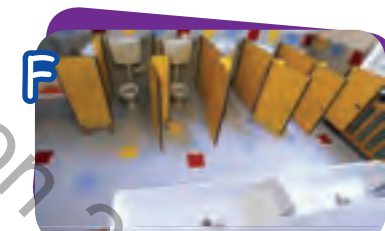












Draw your own place here:

Draw your own place here:

Draw your own place here:





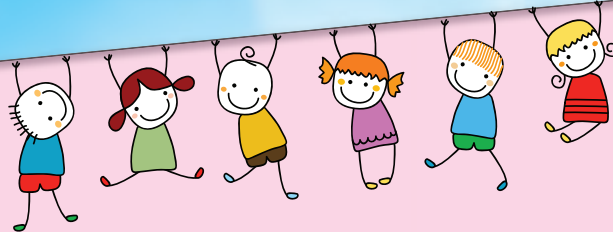
What is a **green school**? Look at this **pamphlet**.



Sunshine Primary School
is a **green school**.

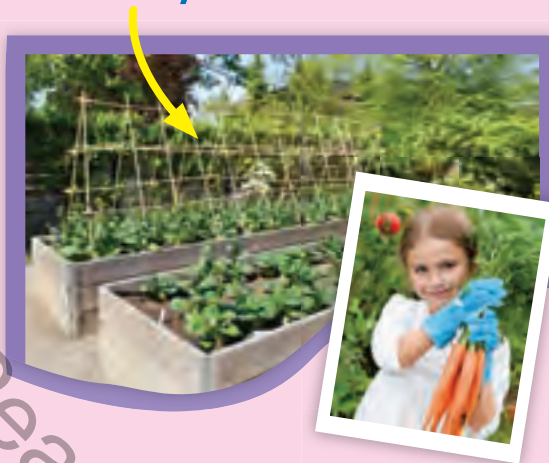


We do things to make our school
a healthy, happy place.



Our green facilities

Sky Garden on 7/F



We grow our own vegetables.
Then we use them to make
healthy lunches!

